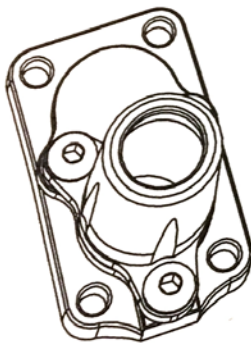


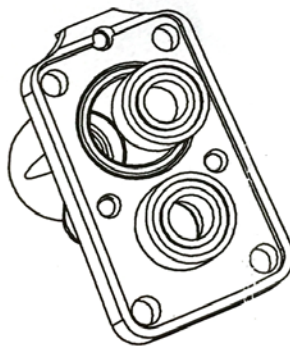
1.

Assemble outer axle housing to outer gearbox case using three M3x6mm screws.



2.

Flip outer axle housing over and install two 5x11mm ball bearings.



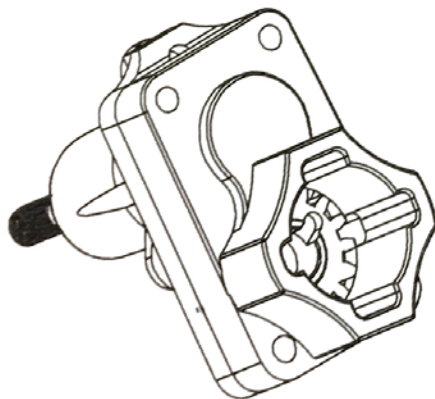
3.

Install drive axle, washer, e-clip, drive pin, and drive gear into upper part of housing, then install second drive gear (pin slot out) into lower part of housing.



4.

Install rear housing cover with M3 screws.



5.

Insert drive pin into longer inner axle, then into the lower drive gear. Finally, attach the entire assembly to the vehicle main rear axle housing, making sure the Hi-Lift drive axle is positioned low for added ground clearance.

