

INTEGY
www.integy.com

Part # C33240
Low Center of Gravity Chassis
Upgrade Kit for
Traxxas Slash 1/10 2WD

LCG CHASSIS ASSEMBLY MANUAL



V1.0.0

Copyright © 2024 Integy, Inc. All Rights Reserved.

For the most up to date version please go to our website at www.integy.com

TOOLS REQUIRED

- 1.5mm Hex Wrench
- 2.0mm Hex Wrench
- 2.5mm Hex Wrench
- 7mm Nut Driver
- Metric Ruler or Metric Digital Caliper
- Hobby Knife or Side Cutters

Screw type within the instructions: **CS** = Counter Sunk / **BHC** = Button Head Cap / **FH** = Flat Head

REVISION: UPDATED PARTS BAG



Before proceeding, please familiarize yourself with the contents of the **UPGRADED PARTS BAG** that is included with the chassis (as shown above). When you see **UPDATED PARTS BAG** in the instructions, please refer to the above parts:

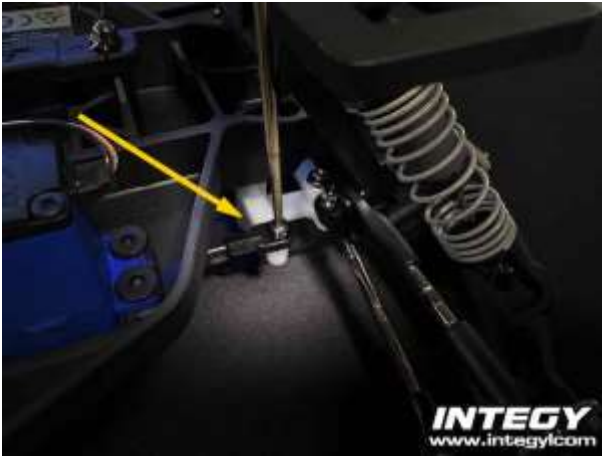
1. Updated **Electronics Plate**, to be used in **Step VI-2**
2. Updated **Steering Posts** and **Electronics Plate Posts**, to be used in **Step III-3** and **Step V-4**
3. **White Spacers**, to be used in **Step VII-3**
4. Optional front bumper hardware (may be needed depending on Slash model # used)

V1.0.0

Copyright © 2024 **Integy, Inc.** All Rights Reserved.

For the most up to date version please go to our website at www.integy.com

I. STOCK 2WD SLASH FRONT DISASSEMBLY



I-1. Remove one **3x12mm BHC screw** to disconnect the steering link from the steering bell crank.



I-2. Remove two **3x15mm BHC screws** and one **4x12mm BHC screw** from the upper bumper mount.



I-3. Remove four **4x12mm CS screws** and two **4x15mm CS screws** from the underside of the front end to remove the front bumper and bumper wedge.



I-4. Remove two **3x12mm BHC screws** attaching the front skid plate to the center area of the chassis.

I. STOCK 2WD SLASH FRONT DISASSEMBLY (Continued)



I-5. Remove two **4x12mm BHC** screws that were hidden underneath the upper bumper mount.

The front end should now be entirely detached from the chassis, only connected by the steering bell cranks.



I-6. Remove the two **3x30mm CS** screws holding the steering bell cranks to the front skid plate. Remove the bell cranks from the posts, allowing the skid plate to be removed.

Also set aside the four **5x8x0.5mm** shims under the bell cranks.

NOTE: The front skid plate will no longer be used.

II. STOCK 2WD SLASH REAR DISASSEMBLY



II-1. Remove two **3x12mm BHC** screws at the forward part of the rear shock tower (just behind where the Traxxas ESC is mounted).



II-2. Remove two **3x12mm BHC** screws attaching the front skid plate to the center area of the chassis.

The rear end should now be entirely detached from the stock chassis.

V1.0.0

Copyright © 2024 **Integy, Inc.** All Rights Reserved.

For the most up to date version please go to our website at www.integy.com

II. STOCK 2WD SLASH REAR DISASSEMBLY (Continued)



II-3. Remove two **3x12mm CS screws** and four **4x12mm CS screws** from the rear skid plate. The rear skid plate should slide out and away from the rear end.

NOTE: The rear skid plate will no longer be used.



II-4. Remove two **3x6mm BHC screws** securing the spur gear cover, then another two **3x8mm FH screws** securing the motor to the gearbox (you can leave the upper screw in place).

Remove the motor and set it aside.



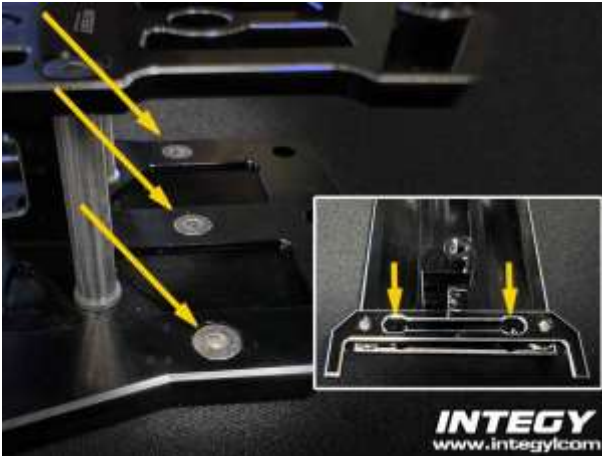
II-5. Remove one **3x40mm BHC screw** and one **3x30mm BHC screw** from the left side of the motor guard.



II-6. Remove one **3x12mm BHC screw** from the right side of the motor guard to detach the motor guard and rear bumper.

NOTE: The motor guard and rear bumper must be modified if you want to continue using it; see **FINAL STEPS** section for more info.

III. INTEGY CHASSIS - FRONT MODULAR ASSEMBLY



III-1. Remove five 3x6mm CS screws from the front area (2x screws are located just behind the servo mount).

The modular front plate should now be entirely detached from the chassis.



III-2. Remove four 3x6mm CS screws from the upper steering plate.

The upper steering plate should now be entirely detached from the chassis.



III-3. Remove two 3x6mm CS screws securing the original steering bell crank posts (shown in the photo) and replace the original posts with the **Updated Steering Posts** inside the **UPDATED PARTS BAG**. Also, loosen (do not remove) the two 3x6mm CS screws holding the servo mounting posts.

NOTE: The steering bell crank posts have one flanged end. The flange goes towards the bottom.



III-4. Install four 5x8x0.5mm shims (from **Step I-6**) onto the updated steering posts, then slide the steering bell cranks on top.

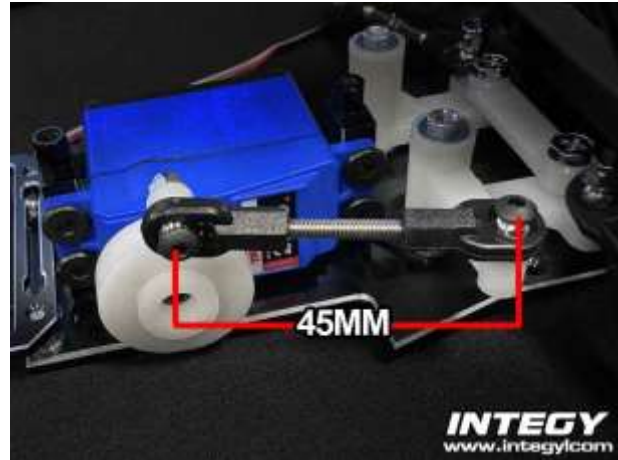
NOTE: If you are upgrading the steering from bushings to ball bearings, swap them out now.

III. INTEGY CHASSIS - FRONT MODULAR ASSEMBLY (Continued)



III-5. Flip the front end over and secure the bulkhead to the modular plate with two OEM **4x12mm CS screws** (from **Step I-5**).

NOTE: There are 3 countersunk holes, but only the outer two are used.



III-6. Install the steering servo with the four OEM **3x8mm FH screws**.

Adjust the OEM Traxxas steering linkage to **45mm (center-to-center)** and re-attach it with one OEM **3x12mm BHC screw** (from **Step 1-1**).

NOTE: Don't forget to tighten two **3x6mm CS screws** attaching the servo mounting posts to the chassis.

IV. INTEGY CHASSIS - REAR MODULAR ASSEMBLY

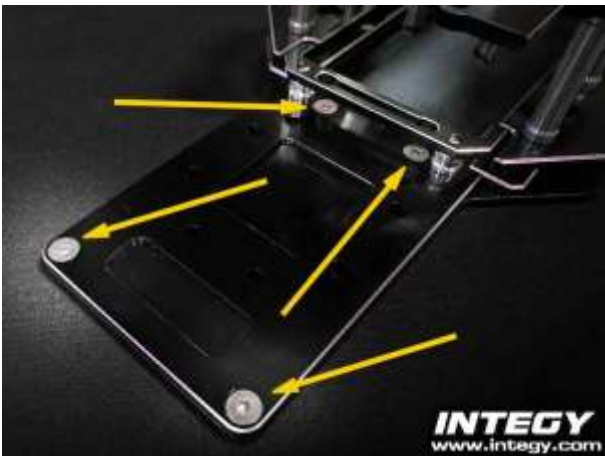


IV-1. Remove two 3x6mm CS screws securing the electronics plate, and remove the original electronics plate.

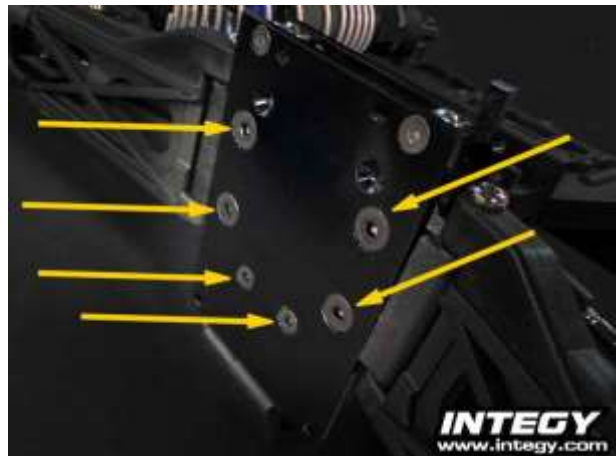


IV-2. Remove the four red thumb nuts and the battery plate.

Set the battery plate aside for now.



IV-3. Remove four 3x6mm CS screws from the rear area; the modular rear plate should now be entirely detached from the chassis.



IV-4. Use two 3x12mm CS screws and four 4x12mm CS screws (from **Step II-3**) to attach the modular rear plate to the bottom of the Slash gearbox.

V. INTEGY CHASSIS - CENTER REVISION



V-1. Remove the four 3x6mm CS screws from the forward area of the main chassis.



V-2. Remove two 3x6mm CS screws from the center area of the chassis.



V-3. Remove four more 3x6mm CS screws from the rear area of the chassis.

The modular side rails should now be entirely detached from the chassis



V-4. Loosen the two 3x6mm CS screws (one on each side) and replace the original rear posts with the [Updated Electronic Plate Posts](#) included inside the [UPDATED PARTS BAG](#).

NOTE: The updated posts are 26mm in length and are shorter than the original 27.5mm posts. The updated posts also have flanges at both ends.

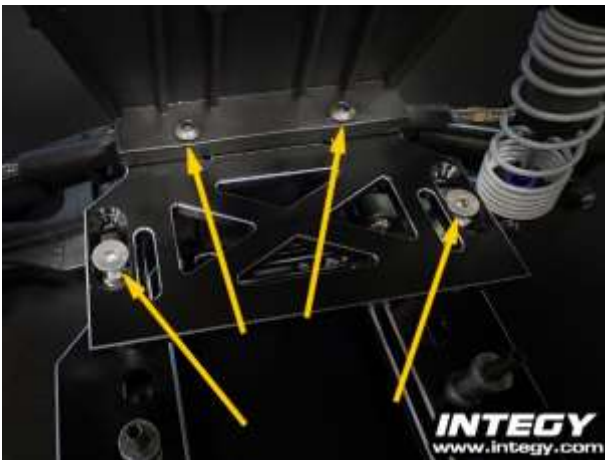
VI. INTEGY CHASSIS - ATTACH THE REAR END



VI-1. Attach the modular rear end to the main chassis using four **3x6mm CS screws**.



VI-2. Get the **Updated Electronics Plate** from the **UPDATED PARTS BAG**; the updated part has 4 slotted cutouts along the sides.



VI-3. Install the **Updated Electronics Plate** using two **3x6mm CS screws** and two **3x12mm BHC screws** (from **Step II-1**).



VI-4. Reinstall the modular side rails using 10 **3x6mm CS screws** (from **Step V-1** to **Step V-3**).

VII. INTEGY CHASSIS - ATTACH THE FRONT END



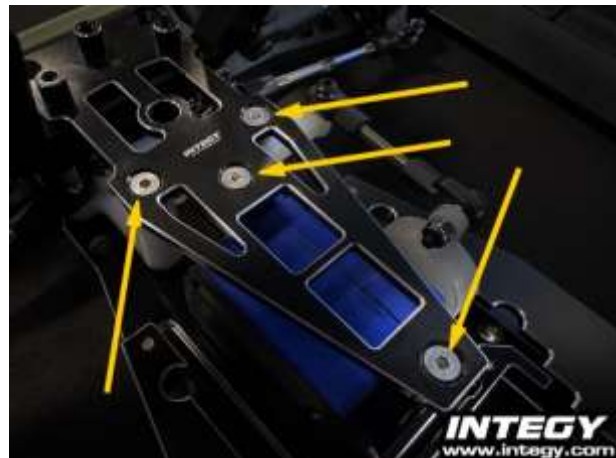
VII-1. Attach the modular front end to the main chassis using two **3x6mm CS screws** that are located just behind the servo area.



VII-2. Use three more **3x6mm CS screws** to secure the modular front end to the chassis; these are located underneath the steering bell crank area.



VII-3. Get two **White Spacers** from the **UPDATED PARTS BAG** and place one white bushing on top of each steering post.



VII-4. Install the steering top plate with four **3x6mm CS screws**; do not tighten these screws all the way yet (wait for the next step).

VII. INTEGY CHASSIS - ATTACH THE FRONT END (Continued)



VII-5. Reinstall two 4x12mm BHC screws (from **Step I-5**) to secure the steering top plate to the front bulkhead.



VII-6. Reinstall the upper bumper brace with the two 3x15mm BHC screws and one 4x12mm BHC screw (from **Step I-1**).

After these are tight, go ahead and finish tightening the four 3x6mm CS screws from the previous **Step VII-4**.



VII-7. Finish attaching the front bumper to the completed chassis underneath with four 4x12mm CS screws (from **Step I-3**).

VIII. FINAL STEPS



VIII-1. Rear Motor Guard Modification: To use the OEM rear motor guard, it will need to be trimmed in two places. using a sharp hobby knife or side cutter, trim **18mm** off from the two places shown.



VIII-2. After trimming the motor guard, line up the guard behind the gearbox and attach the left side using one **3x40mm BCS screw** and one **3x30mm BCS screw** (from **Step II-5**).



VIII-3. Attach the right side of the motor guard using one **3x12mm BCS screw** (from **Step II-5**).



VIII-4. Reinstall the motor with two **3x8mm FCS screws**, then reattach the gear cover with two **3x6mm BCS screws** (from **Step II-4**).

PART VIII. FINAL STEPS (Continued)



VIII-5. Optional Side Bars: To install the optional side bars, simply insert the rails into the side bar mounts, then tighten the **1.5mm set screws** to secure the side bars in place.

ESC and Receiver Mounting:

The user can decide where to mount the ESC and receiver; we recommend to mount the ESC on top of the rear electronics shelf using double-sided tape (not included).

As for the receiver, there are multiple locations available such as underneath the electronics plate, in front of the battery area, on top of the servo plate, or on the modular rails at either side.

