

STEP 1

INTEGY
www.integy.com



Insert drive bolt into lower platform (flat side up)

STEP 2

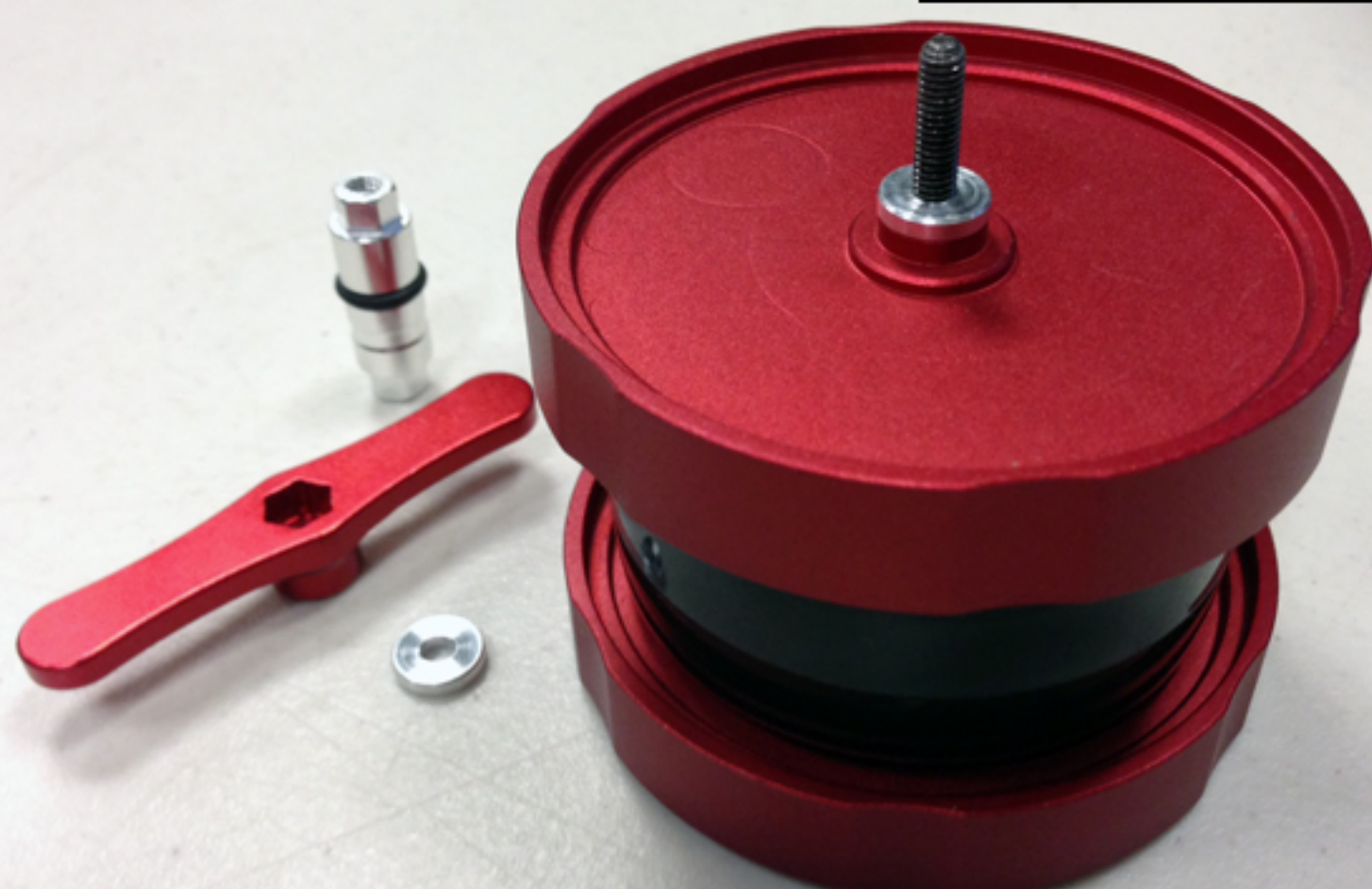
INTEGY
www.integy.com



Place tire and wheel on drive bolt

STEP 3

INTEGY
www.integy.com



Place upper platform (flat side up, it's easier) and washer on drive bolt

STEP 4

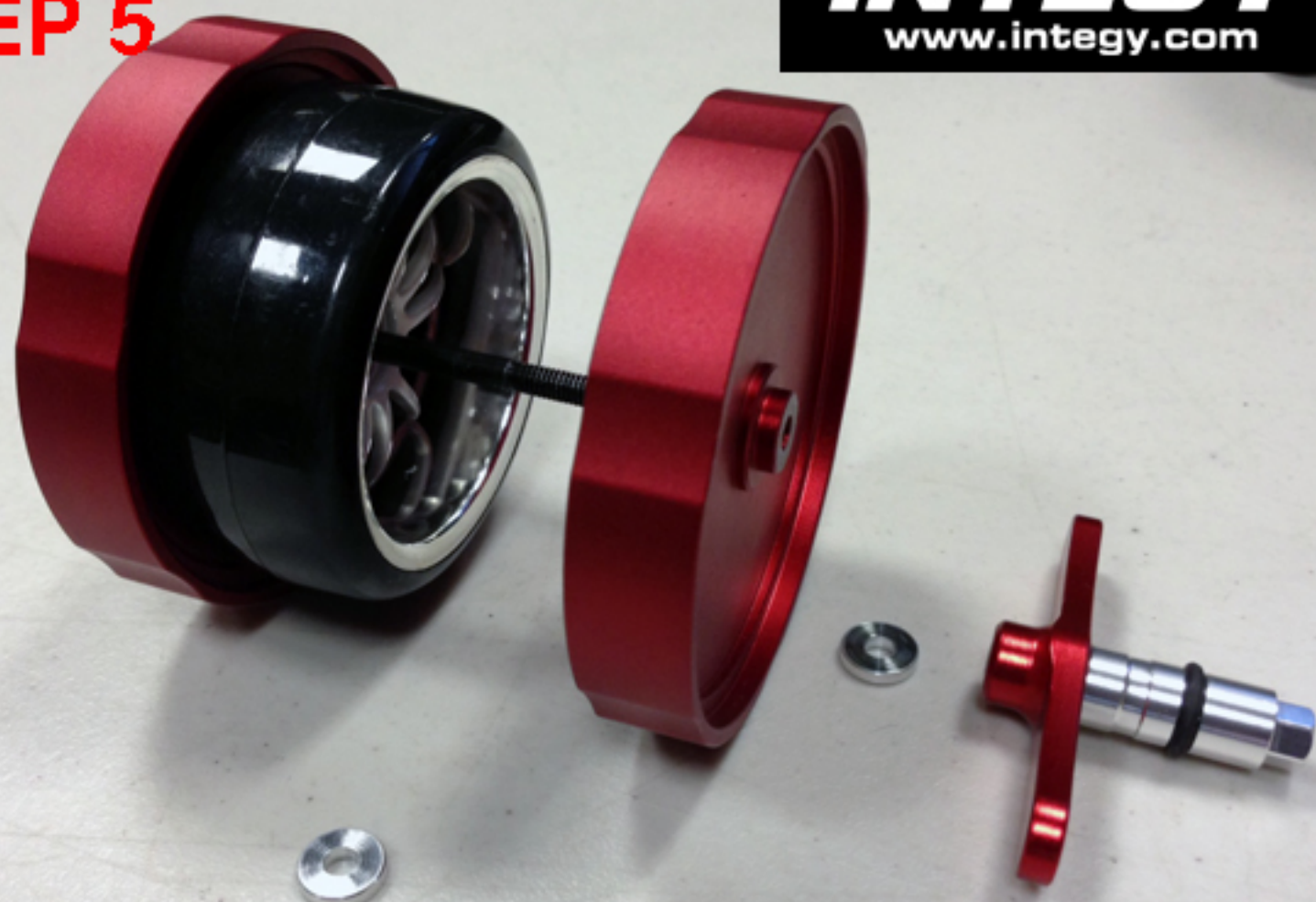
INTEGY
www.integy.com



Put handle and threaded post onto drive bolt.
Turn handle clockwise to compress tire onto the wheel.

STEP 5

INTEGY
www.integy.com



When you're done tire will be installed. Flip the platforms and do the same method to remove tire from wheel